

SNOW DAY #4

In order for this day to count as a day toward attendance, all activities must be completed and returned within 5 days of returning to school. All work will be graded and returned.

Math- Complete Worksheet

Reading:

1. Complete Worksheet
2. Read for 20 minutes _____ Parent initials

Writing: Complete the following prompt. Your writing should be one page long.

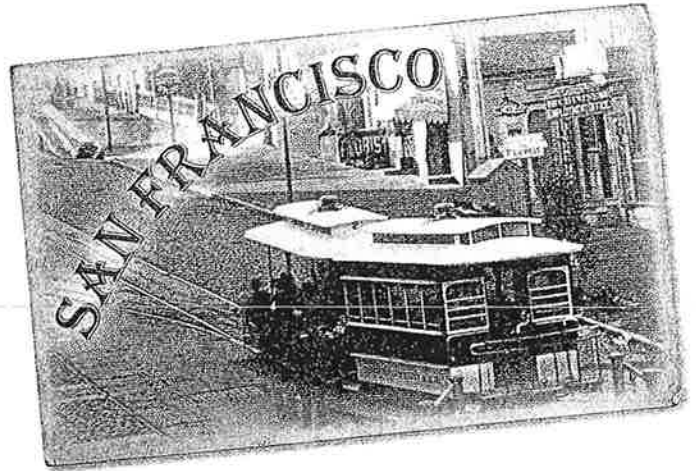
Every snowflake is unique. Write about what makes you unique.

Physical Activity- Complete 15 minutes of physical activity. _____ Parent initials

UNIT 2

Introducing the Words

Listen to this story about a girl who rides the first San Francisco cable car. Pay attention to the words in the color boxes. These are the words you will be learning in this unit.



The Cable Car Is Coming!

(Historical Fiction)

It was August 2, 1873, and Anna stood with her mother on Clay Street. They were not alone. A crowd of people from all over San Francisco was waiting, too. Like Anna, they wanted to ride the city's first cable car. As Anna looked at the people around her, a frown went across her face. She started to worry that she would never find a space in the cable car.

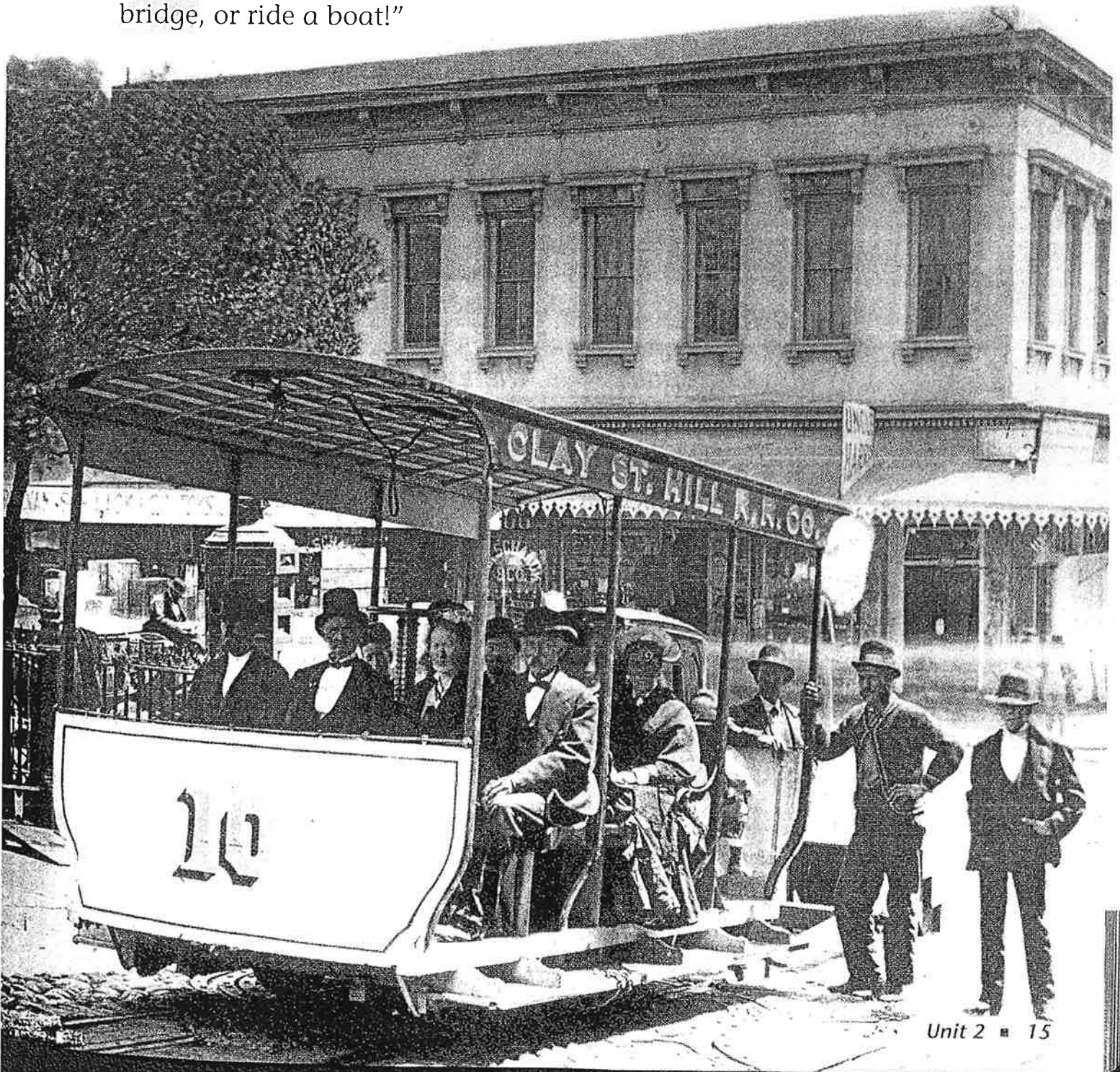
A minute later, Anna heard the bell. Clang! Clang! That was the signal that the cable car was coming! A wire cable buried deep underground pulled it up the hill. The car would cross Webster Street, then the "grip," or conductor, would turn a giant screw to bring the vehicle to a stop.

People started to move, and Anna could see the car for the first time. The car was bigger than she expected, and it was shaped like a box with flat sides. It had steps down to the ground and no wheels. The windows were open to let in fresh air. Some riders could sit on a bench along the sides or back. There were poles every few feet for other riders to hold onto as they stood.



Anna and her mother squeezed into the front of the car. From there, they watched the grip release the brake. Their ride began.

In all, Anna would travel up and down Clay Street for just over a half mile and cross about ten city blocks. After the ride, Anna was so excited that she wanted more adventure. She told her mother, "Tomorrow, let's hop on a train, walk across a bridge, or ride a boat!"





Match the Meaning

Choose the word from the box that matches the meaning in the clue. Write the word on the line.

bridge cross deep fresh frown

1. This is what you might do when you are sad. _____
2. This is how the water is when it is above your head in a pool.

3. This is how you feel after a bath. _____
4. This goes over a stream so you can walk across.

5. This is what you are like if you are a little angry. _____

bench crowd signal travel worry

6. You do this when you take a trip. _____
7. You might do this if you are lost in a crowd. _____
8. You might sit on this at the park. _____
9. You nod your head to mean "yes" as an example of this.

10. You are part of this when you are with many people.

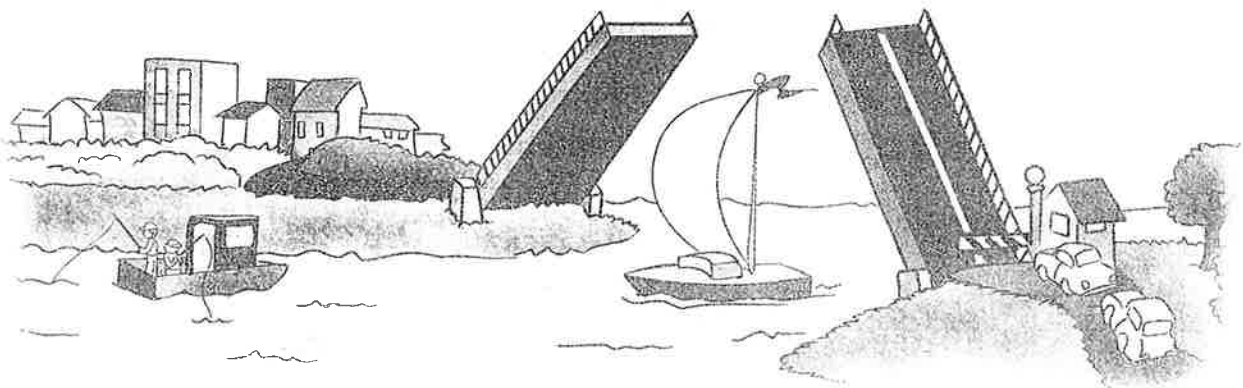


Completing the Sentence

Choose the word from the box that best completes the sentence. Write the word on the line.

bench bridge cross crowd deep
fresh frown signal travel worry

1. Every Sunday, my mom and I _____ to the shore.
2. We like the smell of the _____ sea air.
3. To get to the other side of the bay, visitors _____ a drawbridge.
4. If a tall boat sails near the bridge, don't _____!
5. A flashing red _____ stops the traffic.
6. The boat can pass when the _____ is raised.
7. Once the bridge goes down, the _____ goes over.
8. I sit on a _____ and watch the boats.
9. Some people catch fish in the _____ waters.
10. The only time I _____ is when we have to leave.



MONTHLY ASSESSMENT

Use the Calendar.

1. What is the name month? _____

2. How many days are in this month? _____

3. Name another month with 30 days

4. What day of the week was November 1?

5. Describe the shapes on the calendar.

6. Describe the pattern with letters. _____

7. Which shape is on 3, 6, 9, and 12? _____

8. Which of these shapes roll? _____

Which of these shapes stack? _____

Which of these shapes slide? _____

9. Julie has soccer practice every Tuesday. What are the dates?

10. Karen has soccer practice every Sunday. Does she have more practices in November than Julie?



Name _____

MONTHLY ASSESSMENT

Add.

$$\begin{array}{r} 1. \quad 5 \\ + 6 \\ \hline \end{array} \quad \begin{array}{r} 2. \quad 7 \\ + 4 \\ \hline \end{array} \quad \begin{array}{r} 3. \quad 8 \\ + 3 \\ \hline \end{array} \quad \begin{array}{r} 4. \quad 9 \\ + 3 \\ \hline \end{array} \quad \begin{array}{r} 5. \quad 10 \\ + 2 \\ \hline \end{array} \quad \begin{array}{r} 6. \quad 11 \\ + 1 \\ \hline \end{array} \quad \begin{array}{r} 7. \quad 12 \\ + 0 \\ \hline \end{array} \quad \begin{array}{r} 8. \quad 7 \\ + 5 \\ \hline \end{array}$$

$$\begin{array}{r} 9. \quad 4 \\ + 8 \\ \hline \end{array} \quad \begin{array}{r} 10. \quad 5 \\ + 4 \\ \hline \end{array} \quad \begin{array}{r} 11. \quad 6 \\ + 6 \\ \hline \end{array} \quad \begin{array}{r} 12. \quad 7 \\ + 3 \\ \hline \end{array} \quad \begin{array}{r} 13. \quad 8 \\ + 2 \\ \hline \end{array} \quad \begin{array}{r} 14. \quad 9 \\ + 1 \\ \hline \end{array} \quad \begin{array}{r} 15. \quad 10 \\ + 1 \\ \hline \end{array} \quad \begin{array}{r} 16. \quad 2 \\ + 8 \\ \hline \end{array}$$

Subtract.

$$\begin{array}{r} 17. \quad 10 \\ - 8 \\ \hline \end{array} \quad \begin{array}{r} 18. \quad 11 \\ - 3 \\ \hline \end{array} \quad \begin{array}{r} 19. \quad 12 \\ - 4 \\ \hline \end{array} \quad \begin{array}{r} 20. \quad 10 \\ - 5 \\ \hline \end{array} \quad \begin{array}{r} 21. \quad 11 \\ - 7 \\ \hline \end{array} \quad \begin{array}{r} 22. \quad 12 \\ - 6 \\ \hline \end{array} \quad \begin{array}{r} 23. \quad 10 \\ - 9 \\ \hline \end{array} \quad \begin{array}{r} 24. \quad 12 \\ - 3 \\ \hline \end{array}$$

$$\begin{array}{r} 25. \quad 8 \\ - 6 \\ \hline \end{array} \quad \begin{array}{r} 26. \quad 9 \\ - 2 \\ \hline \end{array} \quad \begin{array}{r} 27. \quad 10 \\ - 7 \\ \hline \end{array} \quad \begin{array}{r} 28. \quad 11 \\ - 6 \\ \hline \end{array} \quad \begin{array}{r} 29. \quad 12 \\ - 7 \\ \hline \end{array} \quad \begin{array}{r} 30. \quad 10 \\ - 8 \\ \hline \end{array} \quad \begin{array}{r} 31. \quad 7 \\ - 6 \\ \hline \end{array} \quad \begin{array}{r} 32. \quad 8 \\ - 7 \\ \hline \end{array}$$

Add or subtract.

$$\begin{array}{r} 33. \quad 3 \\ + 3 \\ \hline \end{array} \quad \begin{array}{r} 34. \quad 4 \\ + 4 \\ \hline \end{array} \quad \begin{array}{r} 35. \quad 5 \\ + 5 \\ \hline \end{array} \quad \begin{array}{r} 36. \quad 6 \\ + 6 \\ \hline \end{array} \quad \begin{array}{r} 37. \quad 12 \\ - 6 \\ \hline \end{array} \quad \begin{array}{r} 38. \quad 10 \\ - 5 \\ \hline \end{array} \quad \begin{array}{r} 39. \quad 8 \\ - 4 \\ \hline \end{array} \quad \begin{array}{r} 40. \quad 6 \\ - 3 \\ \hline \end{array}$$

Make the fact families.

41. $5 + 7 = 12$

_____ + _____ = _____

_____ - _____ = _____

_____ - _____ = _____

42. $3 + 8 = 11$

_____ + _____ = _____

_____ - _____ = _____

_____ - _____ = _____